

City's Preferred Station Site

Site 2 in Pueblo Viejo was recommended to City Council because it has good accessibility, the most supportive land use, and the fewest engineering constraints.



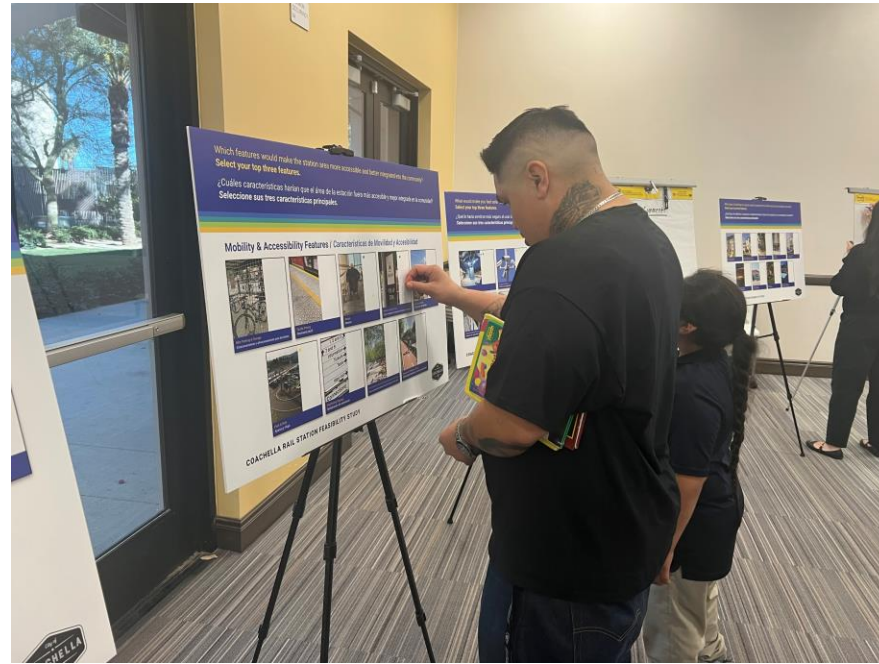
What We've Heard

Top 5 Station Area Land Use Priorities

1. Coffee Shops & Boutiques
2. Mixed-use Residential and Retail
3. Restaurants
4. Open Space
5. Cultural & Entertainment

Top 5 Preferred Station Features

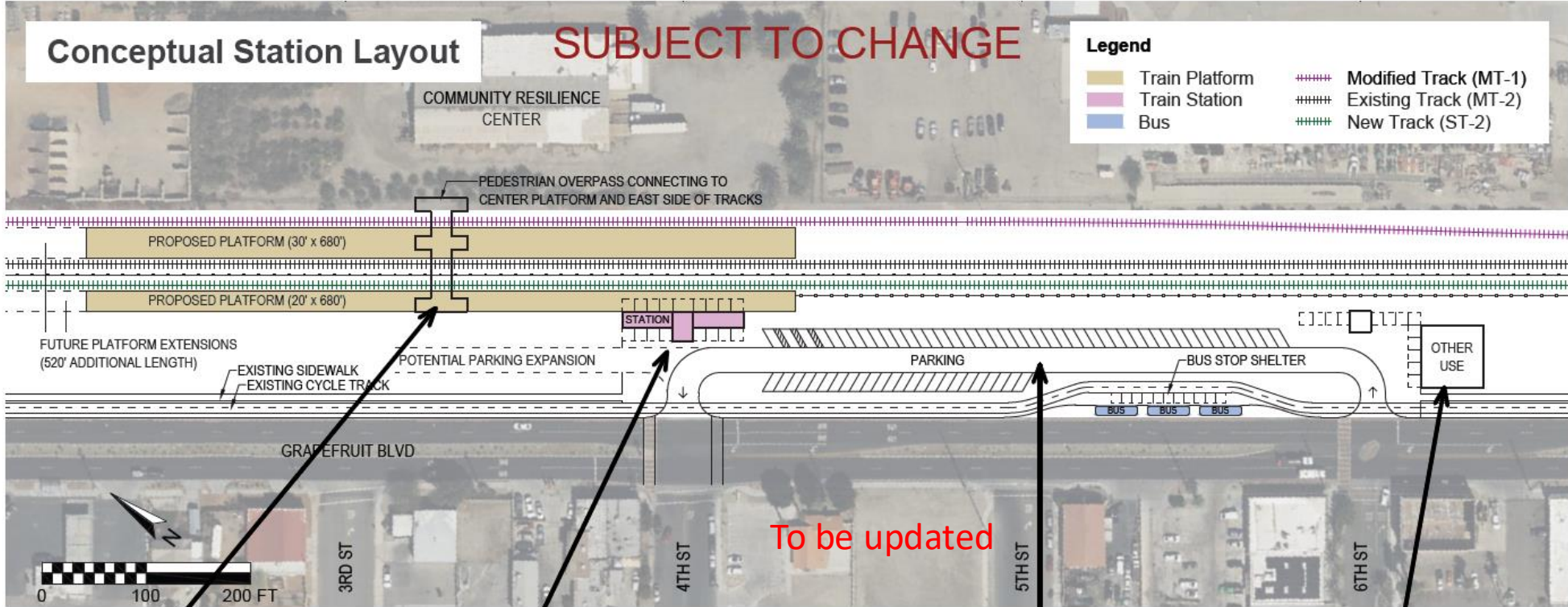
1. Lighting
2. Shaded Waiting Areas
3. Security Cameras
4. Ramps
5. Seating Areas



Historical & Cultural Design Ideas

- Reflect the region's farmworker heritage and Latino cultural roots
- Honor local Indigenous communities through land acknowledgments
- Feature murals and public art by local artist
- Incorporate natural desert elements such as palm trees and date palms

Potential Station Layout



Bridge over Tracks



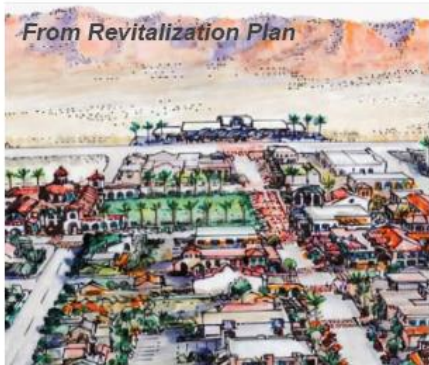
Station Terminates 4th St



Parking Grove



Terminating 6th St



Potential Station Area Design Concepts



6th Street & Grapefruit Blvd



4th Street & Station Exit

What We've Heard:

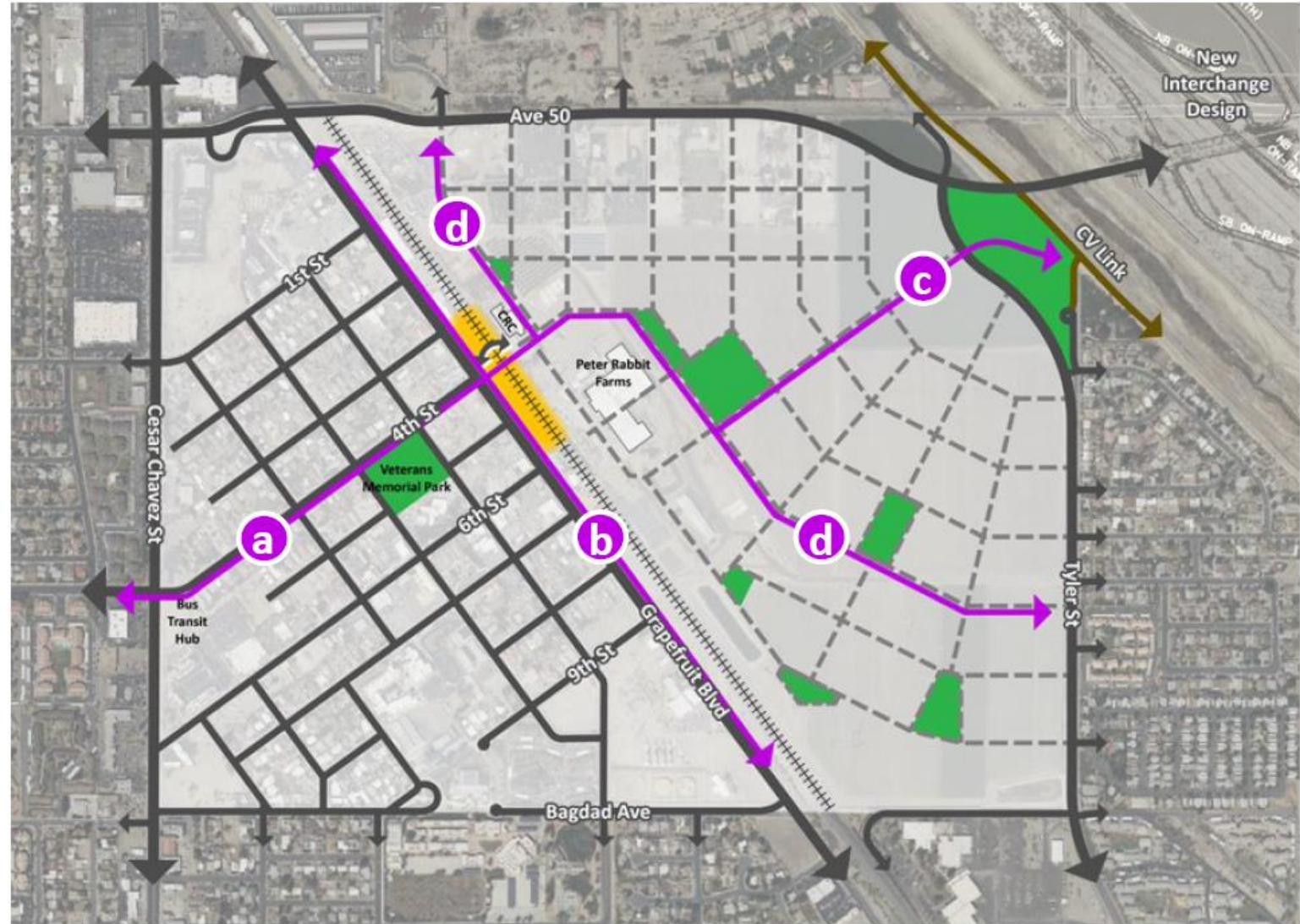
"Something that shows what Coachella Valley is about. Very desert themed."

"Murals and architectural design that represents the community and spaces that can be used for community interaction."

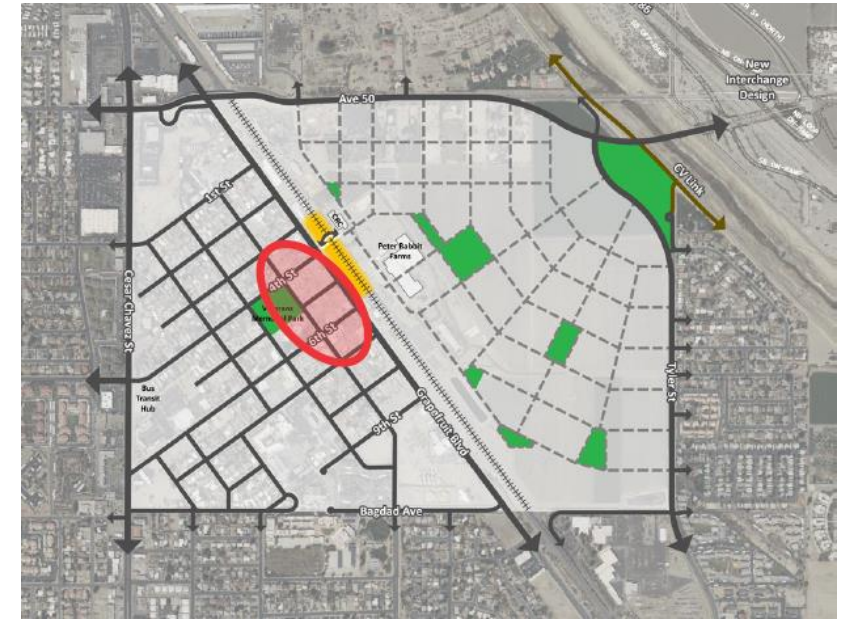
Pueblo Viejo and Future Downtown Expansion Area

Potential Mobility Framework

*What We've Heard:
"We need pedestrian
crossings over or under
tracks...need to connect
to transit options like bus,
rideshare or bicycle."*



Concepts for Active Blocks Near the Station

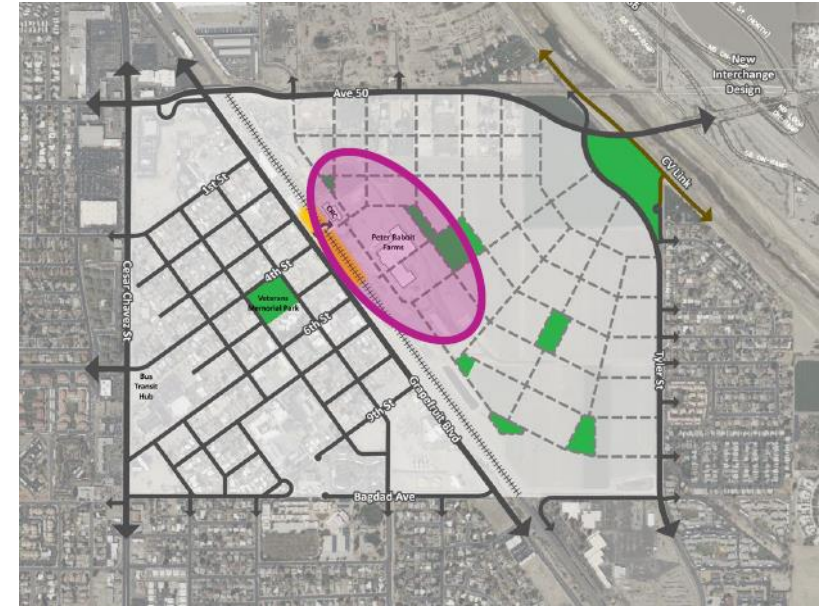


Community's Most Preferred Building Types:

1. Coffee Shops & Boutiques
2. Mixed-Use Residential & Retail
3. Restaurants



Concepts for the East Side of the Tracks



What We've Heard:
"If you want to put housing in the other side of the tracks, you'll have to put restaurants and shops as a buffer zone to the railroad."

Longer-Term: Downtown East Development Concepts



*What We've Heard:
"I like that this site is
very central to
downtown and can
increase economic
development and
future growth."*

If you had \$50 to invest in a future rail station area, what types of services and features would you like to see? Please “spend” your money by contributing to your top three preferred features.

- Vending machines | Phone charging stations | Information kiosk/newsstand
- Bike parking and storage | Package pick-up lockers | Mini-market/fruit stands | Food trucks
- Other

**Imagine you are preparing to ride the train from the future station.
How would you plan to get there?**

Parking car at station

Bus

Bike/Scooter

Walk

Drop off/rideshare/taxi

Describe your ideal station experience in three words.

When you think about this new station, what is the biggest benefit you hope it brings?