



# Coachella Rail Station Feasibility Study and Integrated Land Use and Transit Network

Community Workshop #4



**COACHELLA**  
**RAIL STATION**  
FEASIBILITY STUDY

October 16, 2025

# Coachella Valley Rail (CV Rail) Project

The Riverside County Transportation Commission (RCTC) is leading an effort to initiate passenger rail service between Los Angeles and the Coachella Valley, including a station in the City of Coachella





# Study Purposes

- Evaluate potential Coachella locations for rail station site and layover facility
- Identify the city's preferred station location
- For the city's preferred location, develop:
  - Preliminary engineering plans, architectural drawings, and connectivity plans for the rail station
  - Transit-oriented community plans and economic development strategies for the surrounding areas



# CV Rail and the Coachella Station Study

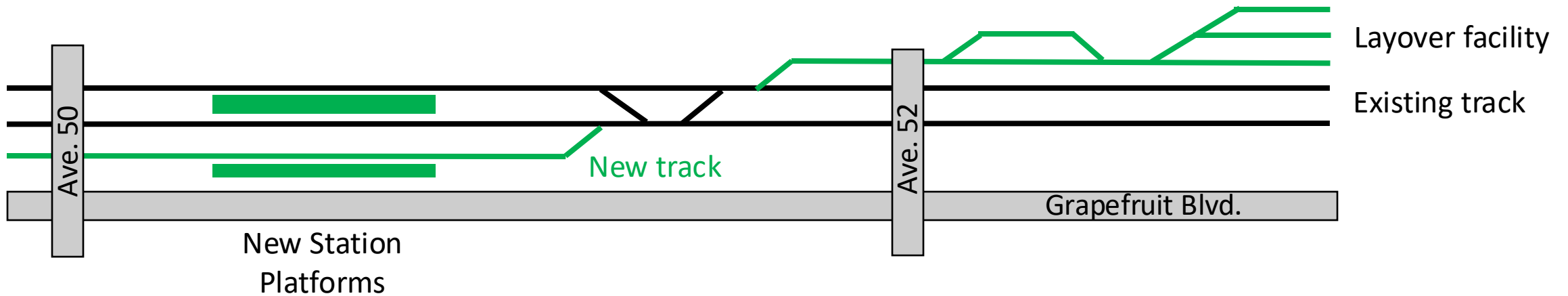
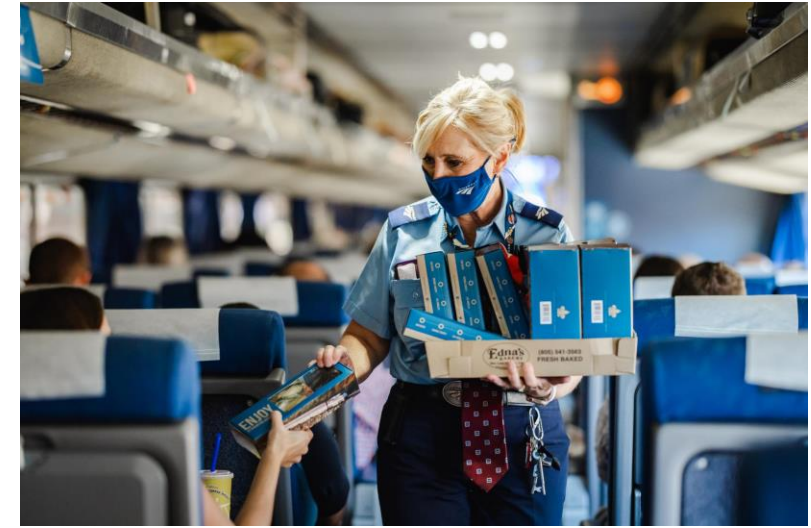
- Final selection of the station locations will be determined in the NEPA/CEQA CV Rail Tier II/Project Environmental Document<sup>1</sup>
- This study will be utilized to help determine the final selection of the preferred alternative during formal NEPA/CEQA process
- Location of tracks for CV Rail are subject to negotiations and agreements with the host railroad
- This study does not commit the City to the approval or construction of any particular station location



1. Led by RCTC under the oversight of the Federal Railroad Administration and Caltrans Division of Rail.

# CV Rail Program Assumptions

- Rail right-of-way owned by Union Pacific
- New third main track along full corridor, likely located on west/south side of existing tracks
- Layover facility located south of Ave. 52
- Intercity-oriented service
  - Two round trips per day at first, with eventually more
  - Onboard restrooms, staff, and food service
  - Luggage storage



# Study Process and Timeline

## *Proceso y calendario del estudio*





# Station Site Evaluation Process

## IDENTIFY

up to three  
potential  
station  
locations to  
evaluate

## DEVELOP

goals &  
evaluation  
criteria to  
determine a  
preferred site

## STUDY

each site's  
current  
condition and  
gather input for  
each site

## ANALYZE

sites according  
to evaluation  
criteria and  
public input

## PRESENT

results and  
recommend  
the city's  
preferred  
location

# Potential Sites

1. Gateway Center
2. Pueblo Viejo
3. Tyler St





## City's Preferred Station Site

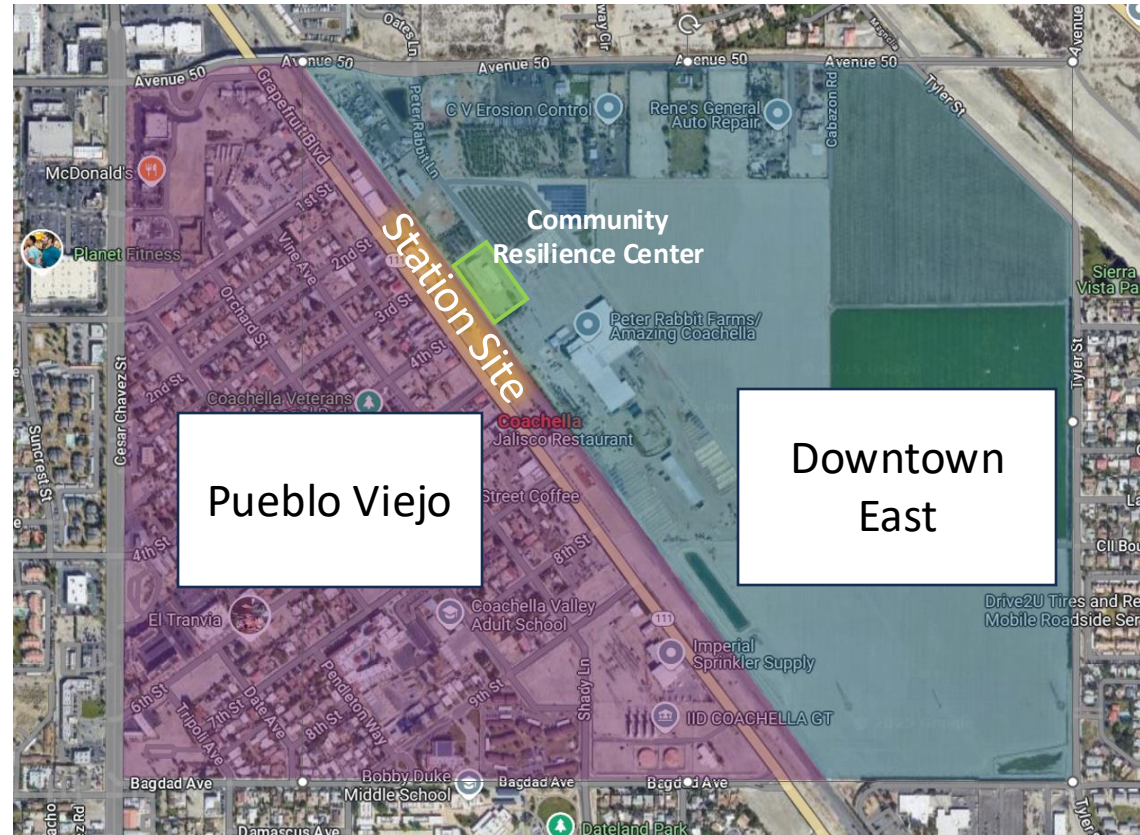
Site 2 in Pueblo Viejo is recommended because it has good accessibility, the most supportive land use, and the fewest engineering constraints.



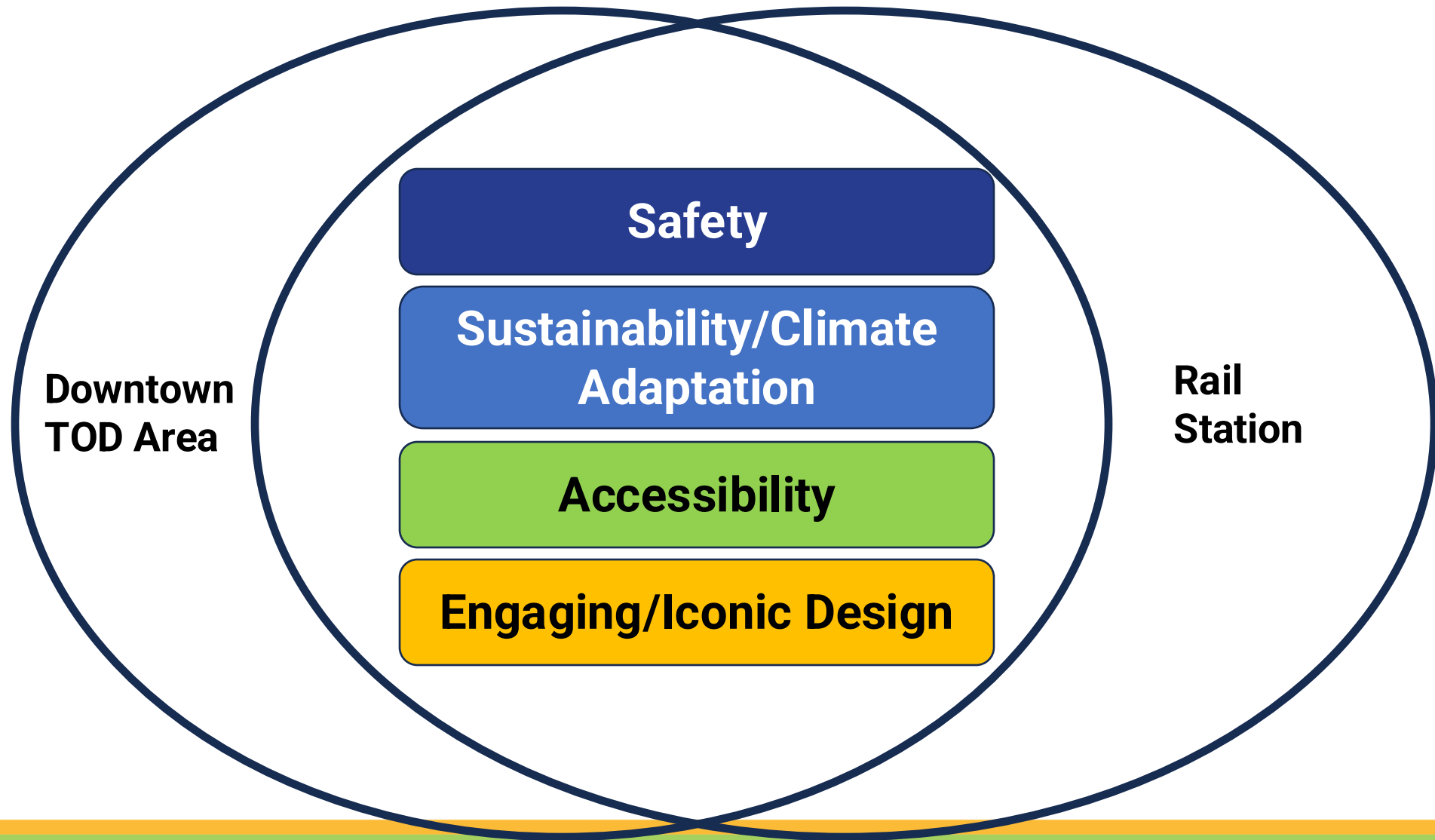


# Downtown Transit-Oriented Development (TOD) Area Plan

- Encompasses both sides of downtown Coachella
  - Pueblo Viejo
  - Downtown East
- Land use and urban design concepts
  - Zones
  - Building types
  - Private frontage
  - Parking strategies
- Mobility Hub Plan
- Housing Element compatibility



# Integrated Design Principles



# Transit-Oriented Development (TOD) Vision

*The City of Coachella will capitalize on the return of passenger rail service to strengthen and accelerate progress toward a vibrant, inviting, comfortable, and culturally rich downtown that supports transit-oriented housing and commercial development, provides an attractive and amenity-rich public realm, facilitates ready access to essential goods and services, and connects seamlessly to adjoining neighborhoods.*





# Downtown Area Design Concepts



*Walkable environment*



*Mixed-density housing*



*Shaded walkways*



*Employment districts*



*Building on agricultural heritage*














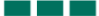



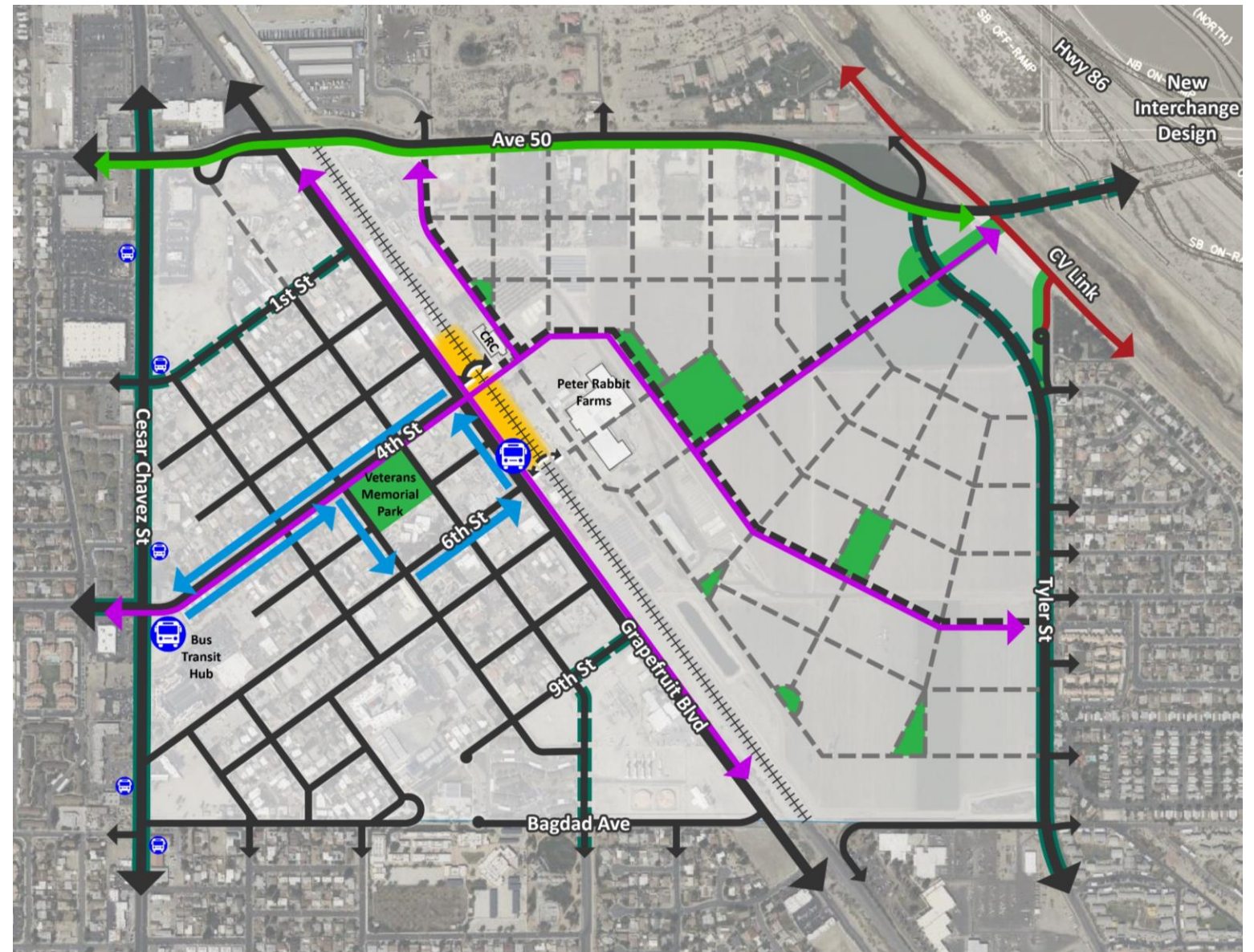
*Cultural celebration*



# Proposed Mobility Network

## LEGEND

-  Existing Streets
-  Potential Primary Street Network
-  Potential Secondary Street Network
-  Rail Lines
-  Train Station and Bus Stop Area
-  Open Space (Green and/or Plaza)
-  Pedestrian Bridge Associated with Station
-  Future Goal: additional east-west connectivity, such as a pedestrian bridge near 6th Street
-  Bus Stops
-  Potential Bus Loop to Station
-  CV Link
-  Primary Bike Routes
-  Existing Bike Routes at Periphery
-  Future Bike Routes at Periphery
-  CV Link Connector





# Proposed Station Layout





View from Grapefruit  
traveling northwest

**DRAFT**





# View from Grapefruit and Fourth

**DRAFT**





# Station Structure





# Proposed Station Platforms





## View from Parking Lot





## Night View from Parking Lot



# Station Design Principles

## Safety

- Openness/visibility
- Lighting

## Sustainability/Climate Adaptation

- Solar panels
- Shade trees and structures

## Accessibility

- Connecting across the tracks
- Ramps and elevators for universal access

## Engaging/Iconic Design

- Circular ramps
- Colorful tiles
- Decorative fencing

# Key Considerations

- **Construction Costs**
  - Including both ramps and elevators raises costs
- **Maintenance**
  - Three sets of elevators
  - Bathroom facilities
  - Ticket vending machines



*Continued community engagement and support will be important for funding, operating and maintaining an iconic Coachella rail station*

# Station Walkthrough Video



## What's Next?

- **Coachella Valley Rail program underway**
  - RCTC initiating environmental clearance process for overall corridor in 2026
  - Funding for construction has not yet been identified
  - Rail service may not begin for 10-20 years, or more
- **Downtown Area Plan can progress while rail corridor is in development**
  - Plans for housing, commercial and retail development
  - Open space and recreation opportunities
  - Builds on Coachella's cultural and agricultural heritage
  - Connectivity for pedestrians, bicycles, transit, and cars



## Feedback Activities

- We want your feedback!
- Visit each exhibit around the room and let us know what matters most to you in shaping the future station area
- Comment cards available for additional input and ideas



# Stay Informed & Share Your Input!



## Website:

<https://qrco.de/CoachellaRailStationStudy>

## Contact Us:

Kendra Reif

Principal Planner

E: [Kreif@coachella.org](mailto:Kreif@coachella.org)